



The Montessori

OBSERVER

*Adapting
the Adult*

Published by the International Montessori Society • 912 Thayer Ave. • Silver Spring, Md. 20910 • Phone (301) 589-1127

Court Hears IMS

On Nov. 23, 1981, the Federal District Court in Baltimore, MD heard testimony concerning the IMS motion for preliminary injunction to permit operation of its teacher training program in Maryland. The five and one half hour hearing consisted essentially of the testimony of three witnesses and the introduction into evidence of various documents relative to procedures employed by the State Board for Higher Education in its action prohibiting the operation of the IMS course in that state. IMS alleges that such procedures are a denial of due process, unconstitutional under the first and fourteenth amendments.

Cont'd. page 3, col. 1

Danger—New Child Care Regulations in California

Unless acceptable waiver can be achieved for Montessori schools, proposed new regulations in California could have an adverse affect on Montessori education in that state.

The new regulations proposed by the California Department of Social Services would: (1) impose burdensome training requirements on staff of Montessori schools (2) establish a restrictive classroom child-staff ratio of 12-1 and (3) require a minimum space per child in the classroom of 35 square feet. IMS believes that such requirements would severely hamper, if not prohibit, the effective application of Montessori principles in Montessori schools in the state.

However, the new regulations do provide for waiver if properly justified in writing and agreed upon by the Department of Social Services. IMS supports application of such waiver based on: (1) teacher certification from a Montessori teacher training program meeting the standards of the International Montessori Council (2) classroom staffing consistent with that recommended by Dr. Montessori and (3) minimum space requirements consistent with nationally recognized space requirements for schools.

For further information about the new regulations, contact: Department of Social Services, Office of Regulations Development, 744 'P' Street, Sacramento, CA 95814.



Katy Grattan with children at Montessori Pre-School (Santa Rosa, CA).

New School Members Noted

The following schools have recently joined IMS as new Montessori school members.

Montessori Pre-School Santa Rosa, CA

The Montessori Pre-School consists of three separate school locations in the Santa Rosa Area. All school sites are under the direction of **Katy Grattan**.

Ms. Grattan has been a leader in Montessori education in the Santa Rosa area since 1971 when she established the first Montessori school there. Since 1971, Ms. Grattan has been active in the development and management of new Montessori schools and extending Montessori education to parents and the general public in the area through various community projects. Recently, Ms. Grattan initiated and managed a series of Montessori workshops which provided in-service credit for teachers in the Santa Rosa City School System.

The Montessori Pre-School program provides both full-day and half-day sessions for 125 children aged 2-6.

Special features of the Montessori Pre-School include Spanish as a foreign language, day care and parent education.

For further information, contact: Katy Grattan, Montessori Pre-School, 620 McDonald Ave., Santa Rosa, CA 95404 (707) 544-7074.

Waukegan Montessori School Waukegan, IL

The Waukegan Montessori School is operated as a non-profit corporation under the direction of **Catherine Ozark**. Ms. Ozark is widely known throughout the local Montessori community for her experience and knowledge in Montessori education. Notably, Ms. Ozark is recognized for training Montessori teachers in the language area of the curriculum.

The program at the school provides full-day and half-day sessions for children aged 2-6. Special features include music, day care and parent education.

For further information, contact Catherine Ozark, Waukegan Montessori School, 658 Grand Ave., Waukegan, IL 60085, (312) 244-9352.

Cont'd. page 3, col. 2



Adapting the Adult

Adults today, lacking a "normalizing" experience in a Montessori classroom in early childhood, cannot readily undo the psychic scars and damage resulting from traditional childhood upbringing. However, despite such lack of prior Montessori experience, adults (and older children) can nonetheless significantly benefit from the application of Montessori principles through the process of "adaptation"—the conscious realization of the individual's perfect interrelated functioning with all humanity in one's own time and place in society.

"Adapting the adult" envisions the application of Montessori principles to adults by a process similar to "normalizing the child" employed in a Montessori primary classroom. Such "adaptation" enables an individual to effectively engage and master adult society, despite the lack of Montessori educational experiences in early childhood.

The "Normal" Adult

The "normal" adult, in contrast to the normal 6-12 year old child in the Montessori elementary environment, does not readily realize perfect adaptation to time and place in society. The typical complexity of life's problems in society deters the adult from realizing life as it actually is—playing a role in the drama of life.

The Drama of Life

In the drama of life, each individual fulfills a unique "role" in accordance with an essentially unknown "script." The *adapted* adult is able to acknowledge and recognize his unique role in society (i.e., his "personality") and also to acknowledge and recognize the true author of the script of the drama of life—completely within one's self, independent of outside forces and conditions.

The True Author

The true author of the drama of life is discovered and recognized within one's self in the process of "adapting the adult." Progress in such adapting process is evidenced by internal qualities, such as the enhanced experience of joy, power and satisfaction. To the extent that the individual asserts the true author *outside* or *beyond* one's self, the experience of suffering and inadequacy persists.

"normalizing"—the fundamental process of the Montessori classroom by which the child's nature profoundly shifts from misbehavior and domination by character defects to a sense of calm and satisfaction consistent with the child's true nature.

Society as Classroom

Montessori education views the unfolding drama of life in society as a "classroom" in which adults, rather than children, are the students. The "classroom" of adult society ultimately includes the entire world as the "environment" and the entire human family as the class of students. Although "society" and the "classroom" are fundamentally similar, certain outward appearances readily obscure such similarity.

Distinctions in Society

Society appears outwardly quite distinct from a classroom. First, society seems rampant with "misbehavior" and disharmony on a massive scale. No classroom of young children was ever so unnormalized or apparently unmanageable. Secondly, the dominant forces and issues in society, such as law, government and economics, appear totally different from the normal areas of concern in a classroom of children. Thirdly, the magnitude of the world's problems, such as nuclear armament and starvation, appear so awesome as to defy any effective engagement by a single individual. Lastly, there seems to be no "teacher" or "guide" responsible for such a "classroom."

The "Teacher" of Society

Noting that society unfolds according to the "script" of the drama of life, the "teacher" of society is none other than the true author of such drama—completely within the individual. To the extent that the individual can discover and acknowledge within one's self such "teacher," society can be effectively engaged and mastered by such individual.

Confronting Society

The "teacher" in society confronts and engages problems in society in a similar manner to situations arising in the process of normalization of a Montessori classroom. Notably, the apparent differences of problems in society and the classroom belie the underlying reality that "adult" and "child" problems are identical in substance since the adult's problems are, in effect, continuations of long-avoided and unresolved problems from early childhood.

Beginning

The beginning of "adapting the adult" is the individual's commitment to the effective application of Montessori principles. Such a commitment inevitably leads to an acknowledgement of the true author of the drama of life, spontaneously expanding the adult's adaptation to society.

Con'd. page 3, col. 2

Participate in the
New Education

JOIN IMS

Benefits Include:

- Eight issues of the *Montessori Observer*
- Montessori publications at discount
- IMS program information
- Listing in IMS Membership Directory
- Membership card

BONUS!

- FREE "Montessori" bumper sticker

Complete and submit the
Reader Response Form

Look for the
February Observer
featuring
*The Nature of
Commitment*

The Montessori Observer

published by
INTERNATIONAL MONTESSORI SOCIETY

912 Thayer Ave.

Silver Spring, MD 20910

(301) 589-127

Lee Havis, Executive Director

The Montessori Observer is mailed eight times each year to IMS members throughout the world. The *Observer* is sent during the following months: Jan., Feb., March, April, May, Sept., Oct., and Nov. The purpose of this publication is to provide news and information about the development of Montessori education to extend awareness of Montessori principles and promote harmony within the Montessori community.

INTERNATIONAL MONTESSORI SOCIETY

The International Montessori Society is sponsored by Educational Services, Inc., a non-profit corporation organized in Maryland, U.S.A. The purpose of IMS is to support the effective application of Montessori principles throughout the world.

IMS ADVISORY BOARD

Elizabeth Hainstock, Educator, Author
Romalda Spalding, Reading Specialist
Dr. Arthur Janov, Psychologist
Dr. R. Orin Cornett, Research Professor

SUBSCRIPTION

Subscription to this publication may be obtained by requesting IMS membership which is open to all individuals for a \$15 yearly fee. IMS school members also receive a subscription to the *Observer*. Complete the membership application form to obtain an individual subscription and other benefits of IMS membership.

ADVERTISING

Advertising space is available for services and products relating to Montessori education. Marketplace ads are \$7/line. Position and Placement ads are \$10 each and will be set and edited by us to conform to space requirements. Write for our advertising outline for rates and other information about design advertising.

© 1981, International Montessori Society

Positions & Placements

Elementary Montessori Teacher: (6-9) to start elementary program, Fall, 1982. Contact Betty Kaiser, Undercroft Montessori School, 3745 South Hudson, Tulsa, OK 74135.

Montessori Teacher: (2½-6), For summer and fall of 1982. Salary negotiable. Located in beautiful southern Oregon. Children's House Montessori, 848 Oxyoke Rd., Grants Pass, Oregon 97526 (503) 474-1860.

Court Hears IMS

Cont'd. from page 1, col. 1

Dr. Richard Matteson, associate professor in the College of Education (University of Maryland) testified for IMS concerning accreditation procedures to be employed with the IMS course. Dr. Matteson noted his position and function on the accrediting committee of the International Montessori Council and how the IMS course is to be evaluated against the Council's standards. Two employees of the State Board for Higher Education and the State Board of Education testified for the defendants.

The Nov. 23, 1981 hearing included arguments concerning the defendants' motion for the federal court to "abstain" from exercising its jurisdiction, thereby forcing litigation of the case in the state court system. However, IMS opposed such "abstention" on the grounds that since jurisdiction is proper in federal court, the plaintiffs are entitled to such federal court litigation. In addition, IMS noted that the present case represented no issue of questionable state law requiring interpretation by the state court of appeals since a similar case had already been decided previously in the state.

The judge's decision on the motions for preliminary injunction and abstention are presently pending.

Advertise in Observer

Place ad here for

sales

offers to buy

services

products

- Marketplace ads are \$7/line.
- Position and Placement ads are \$10 each.

New School Members

Cont'd. from page 1, col. 3

Bi-Lingual Montessori Learning Centre Edmonton, Alberta, Canada

The recently opened Bi-Lingual Montessori Learning Centre is under the direction of **Mrs. G.R. Pibrovec**.

The school program serves children aged 2-6 in a full-day session, five days per week. A special feature of the school is its completely bi-lingual format—French/English. Mrs. Pibrovec contributes uniquely to such format since she received Montessori training in Paris, France.

For further information, contact: Mrs. G.R. Pibrovec, Bi-Lingual Montessori Learning Centre, 5504 143rd St., Edmonton, Alberta, T5R 2V7, Canada.

St. John's Montessori Day School Chula Vista, CA

For information, contact: **Barbara Anne Lilly**, St. John's Montessori Day School, 760 First Ave., Chula Vista, CA 92010.

IMS Membership Information

IMS Montessori school membership is open to all schools committed to the effective application of Montessori principles as set forth in the IMS Montessori school membership criteria. Contact IMS for application and criteria.

Adapting The Adult

Cont'd. from page 2, col. 2

Montessori Classroom

The Montessori classroom for young children provides the adult with the ideal opportunity to develop a commitment to Montessori principles since the young child's spontaneous and receptive nature readily aligns with and supports the adult's efforts on behalf of such a commitment. However, lacking such a classroom opportunity with young children, the adult is nevertheless able to achieve an *adapted* state by consideration alone.

Consideration

The "non-teacher" adult is able to engage in the process of "adaptation" by "consideration"—the thoughtful and conscious expression of the idea itself. Such a "consideration" can be achieved by ample communication and participation with the idea—*commitment to Montessori principles*. IMS supports such "consideration" through its various publications and programs for schools and individuals. Ultimately, IMS Montessori teacher training aims to serve as the primary means for communicating a commitment to Montessori principles.

Creating "Adaptation"

"Adapting the adult" is an integral and inevitable expression of creating the "new education" by Montessori teachers in the classroom with children. Such an educational process will inevitably create "adaptation" in adults as detrimental conditions in society are spontaneously engaged and resolved.

Members Renew . . .

The following schools are acknowledged for their continuing relationship with IMS as recently renewed Montessori school members.

Daycroft Montessori Ann Arbor, MI

The Daycroft Montessori Schools under the ownership of a non-profit corporation is directed **Dr. Josephine Kelsey**.

The school program offers half-day sessions for children from 18 months to about six years of age. Special features include Spanish as a foreign language, parent education, music, art and a summer Montessori program.

For further information, contact: Dr. Josephine Kelsey, Daycroft Montessori School, 2916 Butternut, Ann Arbor, MI 48104, (313) 973-1272.

YMCA Children's House Bristol, TN

The YMCA Children's House, a non-profit corporation, is under the direction of **Patty Browning**.

The school program offers half-day sessions for children aged 2-6. A Montessori day care service at the school enables attendance of children from 7:30 a.m. to 5:30 p.m.

Special features are incorporated into the regular YMCA program and include music, swimming and gymnastics. In addition, a summer Montessori program is offered.

For further information, contact: Patty Browning, YMCA Children's House, 400 Edgemont Ave., Bristol, TN 37620, (615) 968-3133.

Children's House of Montessori Huntsville, AL

The Children's House of Montessori is under the direction of **Kay Bailey Anderson**. The school has been under Ms. Anderson's ownership (as a corporation) since 1972.

Ms. Anderson has been prominent in Montessori education in Alabama and elsewhere for the past decade. Notably, she has held several national and international educational positions, including membership on the Executive Council of the International Association of Educators for World Peace (part of UNESCO and the UN).

The Children's House school program offers half-day and full-day sessions for children 2-6, with a full-day elementary classroom for children 6-9. Special features of the school program include German as a foreign language, after-school care, music, dance and parent education.

For further information, contact: Kay Anderson, Children's House of Montessori, 2605 Leeman Ferry Road, Huntsville, AL 35801, (205) 539-5161.

Address correction requested

912 Thayer Ave., Silver Spring, MD 20910

OBSERVER

The Montessori



Non-Profit Org.
U.S. Postage
PAID
Permit No. 3875
Silver Spring, MD

Marketplace

"Montessori" bumper stickers. Order from IMS. \$1 each. \$0.60 each for quantities over 10. One free to IMS members.

Outdoor Activity Equipment-Backyard BigToys® —attractive, natural-looking equipment featuring sturdy construction of round logs in combination with simple coordinated component system. 10% discount to IMS school members. Contact IMS for further details and order form.

IMS Membership Directory —Vol. I, No. 2, (Fall, 1981), listing all IMS individual and school members as of Nov. 1, 1981. Price: \$5.00. Order from IMS. IMS Montessori school members receive directory free with membership.

IMS Montessori School Membership

Benefits Include:

- Eight issues of the *Montessori Observer*
- Discounts on publications and materials
- Eligibility for group medical plan
- Listing in IMS Membership Directory

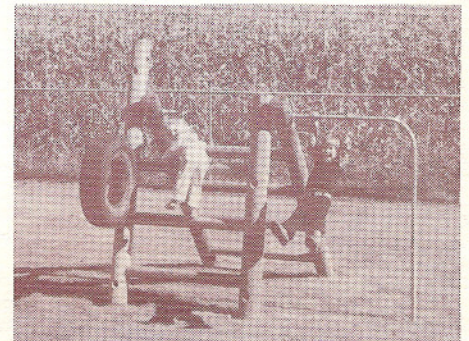
Also, **FREE** with membership . . .

- **"Montessori" bumper sticker**
- **Back Issue(s) of "Observer" (on request)**
- **Copy of IMS Membership Directory**

For application and membership criteria, contact:

**IMS, 912 Thayer Ave.
Silver Spring, MD 20910**

Outdoor Activity Equipment



BY-1, A Backyard BigToys® structure.

IMS offers *Backyard BigToys®* to enable schools and individuals to obtain high quality, versatile activity equipment for outdoor use by children.

Backyard BigToys® is attractive, natural-looking equipment featuring sturdy construction of round logs in combination with a simple coordinated component system. *BigToys®* benefits include:

- **Quality material**
- **Superior Safety**
- **Durability characteristics**
- **Potential to grow and expand easily**
- **Rust-proof**
- **Vandalism resistant**

Contact IMS for price list and a descriptive catalog. **IMS school members receive a 10% discount.**

International Montessori Society



Membership Directory

Vol. I, No. 2
Fall 1981

IMS Membership Directory

This directory lists all individuals and schools associated with IMS through membership. The purpose of this directory is to enhance communication and participation among IMS members and to publicly acknowledge the membership association of schools and individuals with IMS.

The directory is divided into three separate sections, each listing the three distinct membership categories: IMS Montessori school membership information includes name, address, telephone, administrator and other program features such as enrollment and age level.

Price: \$5.00