



The Montessori OBSERVER

Creating the New Education

Published by the International Montessori Society • P.O. Box 4338 • Washington, D.C. 20012 • Phone (301) 589-1127

International Montessori Society *Creating the New Education*

The International Montessori Society, established in 1979 to support the effective application of Montessori principles throughout the world, will enable the Montessori community to realize its great work of transforming society through the creation of the *new education*. IMS is committed to extending Montessori principles throughout the entire field of education as envisioned by Dr. Montessori. IMS believes that it is now possible to realize Montessori's great vision of a transformation in the quality of education in the world.

IMS Goals

IMS will support the creation of the *new education* through a wide range of services and programs for the Montessori community. Specific goals include:

1. To support the effective preparation of Montessori teachers through affiliated training centers and IMS teacher certification;
2. To support the quality and effectiveness of Montessori schools through IMS school membership and commitment to IMS Montessori school criteria;

cont'd. page 6, col. 1



Mary Ruth and Margaret Green working on the elementary course curriculum (Anchorage, AL)

IMS Elementary Course *International Enrollment Open*

The first IMS elementary course for applying Montessori principles with children 6-12 is open to international enrollment. This unique course, limited only to individuals with primary Montessori certification, is sponsored by IMS/Washington State and is under the direction of **Mary Ruth**. Consultation and support for this undertaking is provided by **Lee Havis**, IMS executive director (Washington, D.C.) and **Margaret Green** (IMS/Alaska). Graduates will receive IMS elementary Montessori teacher certification.

Course of Study

The format of the course is independent study, summer materials workshop, individual research, and final evaluation period.

I. *Independent Study*

This phase consists of reading and writing assignments completed at home and submitted by mail to the training program. Assignments are contained in the IMS Elementary Curriculum Guide which is provided

cont'd. page 4, col. 2

IMS Teacher Training Centers Announced

Anchorage, AL
San Antonio, TX
Renton, WA
Washington, D.C.

Anchorage, AL

The Montessori Creative Training Center (Anchorage, AL) is organized as a non-profit educational corporation in the state of Alaska with authorization from the Alaska Department of Education. This training program provides an independent study format and includes a summer workshop to demonstrate and practice the use of the materials. Practical teaching experience is provided through internship at local Montessori schools. Graduates of this course will receive the IMS primary Montessori teacher certification.

IMS/Alaska is under the direction of **Margaret Green** who is also administrator for the Montessori Creative Schools which serves 400

cont'd. page 5, col. 1

Montessori Observer

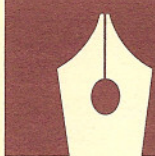
IMS Quarterly Publication

The *Montessori Observer* is a quarterly IMS publication mailed to Montessori schools and IMS members throughout the world. The purpose of this publication is to provide news and information about the development of Montessori education to extend awareness and interest with regard to the application of Montessori principles in the world and to promote harmony within the Montessori community.

The *Montessori Observer* is distributed in February, April, September and November, at no cost to Montessori schools in North America and to IMS members throughout the world. Subscription to this publication may be obtained by requesting IMS membership which is open to all individuals for a \$10 yearly fee.

The *Observer* investigates a special area of Montessori education in each

cont'd. page 4, col. 1



EDITORIAL

Despite the efforts of many individuals and organizations since the establishment of the first Children's House in 1907, Dr. Montessori's dream of the *new education* has not yet been realized. Dr. Montessori's *new education* is education based on her principles which will provide the foundation for the establishment of social conditions needed for peace and harmony throughout the world. The International Montessori Society, formed in 1979, the *International Year of the Child*, offers hope that the *new education* as envisioned by Dr. Montessori may now be possible.

The need for IMS in the Montessori community is based on its intention to establish a clear commitment to the creation of the *new education*. The IMS viewpoint is that a specific commitment to the effective application of Montessori principles throughout the world is needed in order to realize Montessori's dream of the *new education*. As the commitment to Montessori principles expands beyond the Montessori community, the foundation for the *new education* is substantiated and solidified. The alternative to the creation of the *new education* is a continuation of the domination of education by traditional values and the limitations of existing social conditions.

Traditional Education

The lives of most children today are dominated by traditional educational values; i.e., fear, punishment and manipulation. The result of traditional education is individuals who complete school with the attitude that study and work are unpleasant burdens rather than opportunities to serve others and contribute to society. Learning is associated with struggle and fear rather than joy and satisfaction. The larger consequence of traditional education is detrimental social conditions which tend to perpetuate traditional education and reinforce detrimental social conditions (ignorance, attitudes of inadequacy, violence and repression) for future generations.

Society's Commitment

The dominant values in society today are contrary to Montessori principles. Restrictive government regulations and detrimental social conditions continue to frustrate the ability of teachers and schools to effectively apply Montessori principles with children.

The hope for a *new education* lies in public interest in education to achieve needed reform and change in society. The United States spends about 160 billion dollars a year on education with over 10% of the entire population participating as students, teachers or in support services. However, even with this keen public interest and substantial financial commitment, the Montessori community has been unable to marshal a significant public commitment to Montessori principles.

Creating the New Education

Creating the *new education* requires a commitment to Montessori principles larger than reasons and justifications. This commitment must extend beyond the attitudes and feelings of inadequacy which limit our ability to satisfactorily engage the forces opposing the establishment of Montessori principles in society. The Montessori community must dedicate itself to a process of confrontation with opposing social conditions so that disharmony and disagreement is viewed as an opportunity to validate the effectiveness of Montessori principles rather than a justification for a continuation of the present conditions.

The Role of the Montessori Community

The Montessori community is responsible for creating the *new education* by demonstrating to the world the effectiveness of Montessori principles. As the Montessori community demonstrates its ability to fulfill this function, Montessori principles will naturally become accepted and applied throughout the larger educa-

tion community and society in general.

However, effective classroom application of Montessori principles is possible only from a complete commitment to these principles which must be supported throughout the entire Montessori community. IMS aims to provide this needed support.

Purpose of IMS

The purpose of IMS is to support the effective application of Montessori principles throughout the world. IMS aims to further this purpose by building the necessary commitment to Montessori principles through teacher training programs conducted by IMS affiliated centers. IMS publications and membership programs will also contribute to furthering the purpose of IMS by providing communication throughout the Montessori community and beyond.

Need for IMS

The need for IMS is based on the opportunity available now to the Montessori community to realize the creation of the *new education*. As IMS realizes its purpose in supporting the effective application of Montessori principles throughout the world, the entire Montessori community will be supported in its great work to transform society through education.

The Montessori Observer

published by
INTERNATIONAL MONTESSORI SOCIETY
P.O. Box 4338
Washington, D.C. 20012
(301) 589-1127
Lee Havis, Executive Director

The Montessori Observer is a quarterly IMS publication mailed in February, April, September and November to Montessori schools and IMS members. The purpose of the publication is to provide news and information about the development of Montessori education to extend awareness of Montessori principles in the world and promote harmony within the Montessori community.

INTERNATIONAL MONTESSORI SOCIETY

The International Montessori Society is sponsored by Educational Services, Inc., a non-profit corporation organized in Maryland, U.S.A. The purpose of IMS is to support the effective application of Montessori principles throughout the world.

SUBSCRIPTION

The Montessori Observer is provided at no cost to Montessori schools in North America. Subscription to this publication may be obtained by requesting IMS membership which is open to all individuals for a \$10 yearly fee. Complete the membership application form to obtain an individual subscription and other benefits of IMS membership.

ADVERTISING

Advertising space is available for services and products relating to Montessori education. Marketplace ads are \$7/line. Position and Placement ads are \$10 each and will be set and edited by us to conform to space requirements. Write for our advertising outline for rates and other information about design advertising.

© 1980, International Montessori Society

IMS Training Centers

Alaska, Anchorage

Montessori Creative Training Center
Margaret Green, Director
2601 Fairbanks St.
Anchorage, AL 99503
(905) 272-5033

Texas, San Antonio

Kriterion Montessori Teacher Center
Joh Laven, Director
611 West Ashby Place
San Antonio, TX 78212
(512) 735-9778

Washington, Renton

IMS/Washington State
Mary Ruth, Director
P.O. Box 2019
Renton, WA 98055
(206) 266-9666

Washington, D.C.

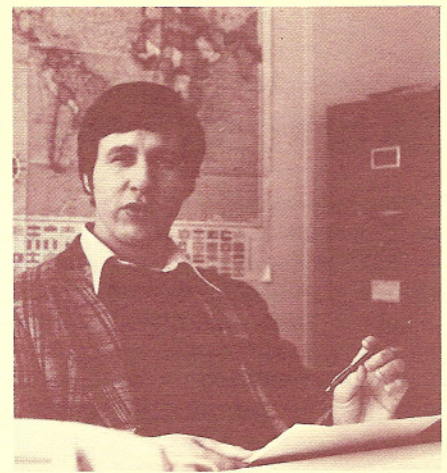
IMS/Washington, D.C.
Lee Havis, Director
P.O. Box 4338
Washington, D.C. 20012
(301) 589-1127

IMS Membership Open to Individuals

Individuals are invited to participate in Montessori education through IMS individual membership. The purpose of this program is to enable individuals to support the work of IMS in furthering the application of Montessori principles throughout the world. IMS members receive valuable benefits including:

- Subscription to *Montessori Observer*
- IMS membership card
- Discount on Montessori publications
- Information about IMS Montessori programs

Apply for IMS membership by completing the Reader Response form and submitting to IMS with the \$10 membership fee. If your application is sent by April 1, 1980, you receive a free copy of *The Essential Montessori* presenting basic Montessori principles of education.



Lee Havis, IMS executive director in main offices near Washington, D.C.

Lee Havis is IMS Executive Director

Lee Havis, IMS executive director, founded IMS in 1979 to provide the basis for realization of Montessori's *new education* through support of the effective application of Montessori principles throughout the world. His varied educational background includes B.A. in engineering (University of Connecticut; Storrs, CT), M.A. in early childhood education (University of Maryland; College Park, MD), and J.D. in law (Catholic University; Washington, D.C.).

Mr. Havis first became interested in children and education during Peace Corps training in preparation for a college teaching position at the University of Panama in 1967. After returning from Panama and serving for a short time as a patent examiner in the U.S. Patent Office, he decided to enter the education field as a full-time career. Since 1969, Mr. Havis has engaged in a wide range of educational experiences including teaching, administration and writing which has enabled him to personally study the principles required to realize Montessori's *new education* in the world. In 1976, he received Montessori teacher training and from 1976-79 served as administrator of the National Center for Montessori Education (Washington, D.C.).

As executive director of IMS, Mr. Havis manages the communication and coordination necessary to assure the effectiveness of IMS. He welcomes comments and suggestions from the Montessori community regarding the needs of the Montessori community in realizing the creation of the *new education*.

Establish an IMS Affiliated Training Center

The training and certification of effective Montessori teachers is needed today to support the development and extension of Montessori principles throughout the world. The IMS affiliation program supports the development and effective operation of the needed training centers.

The IMS affiliation relationship is based on a written agreement in which the affiliate sponsors and owns the training center and IMS offers its recognition and support to the center and its certification to individuals completing the course requirements. Graduates with a bachelor's degree receive full IMS certification and non-college graduates receive competency certification.

The IMS Primary Curriculum Guide and other training materials provided by IMS enable the affiliate to structure an effective course. The curriculum guide presents a specific sequence of activities in a format of independent study, materials workshop and internship experience. The IMS Elementary Curriculum Guide will soon be available to affiliates so that recognized ele-

mentary teacher training can be offered also by affiliates.

Personal consultation and other support services offered by IMS assure complete communication of accurate information with regard to affiliation and the training program. IMS can be particularly effective in arranging course approval and cooperation with the local government agency and meeting its regulations and requirements. IMS and its affiliates work in partnership to provide the teachers needed to effectively apply Montessori principles in the classroom.

Affiliation requires a financial commitment to IMS and completion of all application procedures. However, there is no cost for completing the initial application form to determine and assess your suitability and interest for sponsorship of a course. Interested individuals are invited to apply to establish an affiliated IMS training center in areas not presently served by IMS affiliates. Complete the Reader Response form for further details and an application.

IMS Announces Montessori School Membership

The IMS school membership program enables Montessori schools to participate more actively with the Montessori community throughout the world. IMS membership provides your school with public demonstration of its commitment to Montessori principles in addition to eligibility to receive many valuable benefits and services including:

- Montessori publications at discount rates
- Coordination with teacher training
- Listing in IMS Montessori School Directory
- Group medical and dental insurance
- Sponsoring specialized courses

IMS school membership is limited to programs which apply Montessori principles as specified by the established IMS Montessori school criteria. Complete the Reader Response form for details and an application for this membership program. Schools which join by April 1, 1980 will receive a free copy of *The Essential Montessori* by Elizabeth Hainstock and will be entitled to one free advertisement in Positions and Placements in any 1980 issue of the *Observer*.

Montessori Observer cont'd. from page 1, col. 2

issue in addition to providing regular information of timely importance to the Montessori community. This first issue of the *Montessori Observer* (February, 1980) features *Creating the New Education* to introduce IMS and its purpose with respect to the Montessori community.

The content of the *Observer* is drawn from the demonstrated interest of the Montessori community and the unfolding development of IMS programs. The April *Observer* will feature *Montessori organizations*; a study of the organizational structure of the Montessori community. Please send information about your local and regional organizations to the *Observer*. In addition, you are always invited to contact IMS with comments, ideas and interest.

IMS Elementary Course cont'd. from page 1, col. 3

to students upon enrollment. The following areas are presented: Montessori Principles, Classroom Observation, Child Development and Introduction to Montessori Materials.

II. *Materials Workshop* (July 14-Aug. 1, 1980)

During the materials workshop, instruction is provided through lecture, demonstration and practical experience with materials and methods in: math, language, cultural subjects and music.

III. *Individual Research* (Sept. 1980-June, 1981)

Students engage in independent study and research projects by completing monthly assignments in math, language, cultural subjects and music based on information provided during the materials workshop. Observations of an elementary classroom are also required. Students with previous Montessori teaching experience are eligible for provisional certification upon completion of the materials workshop so that they may supervise an elementary classroom during this period.

IV. *Final Evaluation Period* (June, 1981)

The students return to Renton, WA for a concluding week of seminar instruction and individual evaluation. Individual research projects are presented to the class so that each student can benefit from the individual research of the others.

Enrollment and Tuition

Enrollment is limited to fifty students with applications received and reviewed on a first come basis. Tuition is \$1200 payable in installments as follows: \$50 (registration), \$350 (upon acceptance into program), \$350 (prior to materials workshop), \$200 (by January 1, 1981), \$200 (prior to final evaluation period).

School Sponsorship

Montessori schools which intend to establish an elementary classroom for September 1980 are invited to consider sponsoring a qualified primary teacher to attend the course. During the 1980-81 school year, qualified students will be eligible to supervise an elementary classroom while completing individual research work.

The only time required away from the teacher's local area is the materials workshop (July 14-Aug. 1, 1980) and the final evaluation period (June, 1981).

Cosmic Education

The IMS elementary training program directs attention to cosmic education which enables the child to adapt to its environment through a recognition of the total interrelated functioning of the world. Cosmic education is particularly suited to the elementary child's mind which is uniquely able to acquire broad knowledge through its power of imagination.

The elementary training program provides individuals with preparation in the development of character, knowledge and application of Montessori principles, purpose and use of advanced Montessori materials and ability in applying the cosmic approach to enable children to acquire culture and to order their minds to achieve adaptation to their environment.

For further information and application, complete the Reader Response form.

IMS Associate School Membership Offered

IMS has designed an associate school membership program to extend awareness and application of Montessori principles beyond the Montessori community to include the entire field of education. All non-Montessori schools are invited to participate in this program to support the extension of Montessori principles and establish a closer relationship with the Montessori community.

Benefits of associate school membership include:

- Subscription to *Montessori Observer*
- Group medical and dental insurance
- Discount on Montessori publications
- Information about IMS programs

Complete the Reader Response form for further details and application.

IMS Teacher Training

cont'd. from page 1, col. 1

children from preschool to eighth grade in eight locations in the Anchorage area. Mrs. Green received her M.A. degree in education from Columbia University and holds Montessori certification from Penn-Mont Academy.

Mrs. Green has an extensive background and experience in Montessori education. In addition to supervision of the Montessori Creative Schools over the past 10 years and the recent development of the teacher training program, she has written and published a Montessori curriculum guide for parents and teachers and has studied the application of Montessori principles in schools throughout the United States and Europe. Mrs. Green will participate in the instruction of the first IMS elementary training course offered in July, 1980, at IMS/Washington State (Renton, WA).

For further information about the IMS course in Alaska, contact: Margaret Green, Montessori Creative Training Center, 2601 Fairbanks St., Anchorage, AL 99503, (905) 272-5033.



Joanna Laven, co-director of Kriterion Montessori Teacher Center, teaching in her elementary classroom (San Antonio, TX)

San Antonio, TX

The Kriterion Montessori Teacher Center will provide Montessori teacher training in affiliation with IMS for the San Antonio, TX area. The IMS/San Antonio primary program will focus particular attention on cultural subjects as preparation for the child's conscious learning at the elementary level. The format of the course will be classroom instruction combined with practical internship experience in local Montessori schools. Graduates of the course are eligible to receive IMS primary Montessori teacher certification.

The San Antonio program is under the direction of **Johannes and Joanna Laven** who will also serve as instructors in the course. The other faculty include: **Dr. Hans Laven, Godelieve J. Jansen, Rita Bustamante** and **Willis Jansen**.

The Kriterion training program is associated with the Kriterion School at the same location which is also under the direction of the Lavens. The recently expanded Kriterion School program served children from preschool through the elementary grades.

Mr. Laven has been active in Montessori since the 1940's when he began his work in Montessori education in his native Holland. Since 1959, he has owned and operated Montessori schools in the United States and has directed workshops, seminars and other training activities primarily in Southern California and Texas.

The IMS/San Antonio program will soon begin enrollment for the 1980-81 course. For additional information, contact: Joh Laven, Kriterion Montessori Teacher Center, 611 West Ashby Place, San Antonio, TX 78212 (512) 735-9778.

Renton, WA

The Washington State IMS course is held at Renton, WA under the direction of **Mary Ruth** who is also curriculum coordinator for the IMS Parent Education Course I. The IMS/Washington State primary course consists of independent study, classroom instruction in the summer and an internship at area Montessori schools. IMS primary teacher certification is offered to graduates upon completion of all course requirements.

Mrs. Ruth, who received her Montessori teacher certification from Ft. Wright University (Spokane, WA) has been owner and director of Montessori Manor School (Renton, WA) for 20 years. The Montessori Manor program serves children from preschool through the elementary grades.

In addition to the primary Montessori course, IMS/Washington State will sponsor the first IMS elementary course for applying the Montessori principles with children 6-12. Mrs. Ruth will serve as instructor of language in this course in addition to program director. Graduates of this course will receive IMS

elementary Montessori teacher certification. The IMS/Washington State elementary course will serve as a guide for other IMS affiliates which may provide a similar certification program in the future.

For further information about IMS/Washington State, contact: Mary Ruth, IMS/Washington State, P.O. Box 2019, Renton WA 98055 (206) 255-9666.

Washington, D.C.

IMS/Washington, D.C. is designed as the model training center for IMS programs throughout the world to coordinate the development of IMS training techniques and procedures. In addition to its valuable function as a model center, this program will provide a source of primary Montessori teachers for the Washington, D.C. area.

IMS/Washington, D.C., sponsored by Educational Services, Inc., with offices located in Silver Spring, MD, will seek approval for operation through the Maryland State Board for Higher Education. The program will be under the direction of **Lee Havis** and offer the IMS primary teacher certification for applying Montessori principles with children 2-6.

The Washington, D.C. course will offer an independent study format which closely follows the IMS Primary Curriculum Guide. Length of the course will be about one year and includes classroom instruction in August, 1980 with internship experience in area schools.

IMS welcomes inquiries and applications for establishing affiliated training centers in locations not presently served by affiliates. For further information, complete the Reader Response form.

Apply for

IMS Montessori School Membership

Benefits include:

- Montessori publications
- Group Medical Insurance
- Listing in IMS School Directory

BONUS! If application sent by **April 1, 1980**, you receive a free copy of *The Essential Montessori* by Elizabeth Hainstock.

Complete the Reader Response form today.

3. To support the application of Montessori principles at home through parent education courses and other services and resources to parents;
4. To expand awareness of Montessori principles throughout the general public through IMS individual membership and circulation of the *Montessori Observer*, the official IMS quarterly publication;
5. To support effective communication and harmony throughout the entire Montessori community through wide distribution of the *Montessori Observer* to Montessori schools and assistance in the formation of local and regional Montessori organizations;
6. To extend the application of Montessori principles throughout the educational community through communication and planning with respect to IMS programs.

Main Office

The main IMS office is located in Silver Spring, MD, a nearby suburb of Washington, D.C. This office and all other activities, programs and operations of IMS are managed and coordinated by Lee Havis, IMS executive director. An advisory board of prominent individuals will be organized to assure communication with the largest possible community of interest.

IMS Sponsor

IMS is sponsored by Educational Services, Inc., a non-profit educational corporation in the United States. Educational Services, Inc., founded and directed by Lee Havis, is committed to the realization of quality education throughout the world. Programs and services of Educational Services, Inc. are provided to qualified individuals without regard to race, color, sex or national origin.

Need Montessori Teachers?

Apply to IMS to establish an affiliated training center.

Benefits include:

- IMS primary and elementary certification to graduates
- IMS curriculum guides and consultation
- Special support services

Complete the Reader Response form today.

Group Medical and Dental Insurance Available to IMS Members

A major benefit of IMS school membership is the availability of group medical and dental coverage for school employees through the unique health maintenance approach.

Today's rising hospital costs call one's attention to the need for adequate insurance coverage against accident and illness. Perhaps the most significant change in the future of medicine and hospital care is the growing financial commitment required to attain the full benefits of modern medical technology.

The IMS health maintenance plan, which encourages preventative and out-of-hospital care, is a modern response to higher hospital costs. Historically, insurance plans have provided payment for hospital stays but have not encouraged individuals to responsibly maintain their health outside of the hospital; i.e., insurance benefits of many programs apply only if hospital care is required. There is no coverage for preventative care or out of hospital treatment. Since hospital costs have risen sharply in recent years, premiums for these insurance programs are high and benefits considerably limited.

The IMS health maintenance plan covers many routine medical procedures, such as physical exams and outpatient care, which enhances an individual's health and tends to reduce the length of time in the hospital. Since many expenses out of the hospital are covered, individuals are encouraged to responsibly care for their health and to avoid expensive hospital care. However, should hos-

pital care be required, the IMS plan pays 80% of the first \$2,500 of usual, customary and reasonable covered charges and 100% thereafter up to \$1,000,000. Since this plan encourages responsible health maintenance rather than expensive hospital care, premiums are relatively low for the benefits and protection offered.

The basic health maintenance program provides coverage in two item categories: Part A items (\$0, \$50, \$100 deductible as selected) and Part B items (\$100 deductible; no selection). Part A items include expenses such as outpatient facility, surgery, in and out of hospital and doctor visits. A \$0 deductible for these Part A items tends to encourage out of hospital care. Part B covered items generally relate to basic hospital costs such as hospital room and board. These items are covered with a \$100 deductible.

The IMS health maintenance plan and other related insurance programs are available only to IMS member schools. IMS membership must be completed prior to acceptance into the insurance program.

IMS school members qualify for this insurance plan with as few as two employees. Teachers and other regular school employees will appreciate your school's support and assistance in protecting their health through this worthwhile insurance plan. Complete the Reader Response form to request application information about the IMS insurance program.

Parent Education Course Featured

Parent Education Course I is the first of a series of specialized courses offered by IMS to extend Montessori principles beyond the Montessori school classroom.

IMS develops and provides specialized courses to be sponsored by IMS school members. These courses will be conducted by qualified Montessori professionals in accordance with IMS policies and procedures. Graduates who complete all course

requirements are eligible for special IMS certification.

Parent Education Course I is a 12-hour course to enhance communication in the home-school relationship. **Mary Ruth**, curriculum coordinator for this course, is available to present this course and train instructors. Complete the Reader Response form for information about qualifying as an instructor and to have this course given in your area.

Advertising in the *Observer*

Advertising to the Montessori community is difficult since this limited market consists of highly selective customers in diverse locations. High quality and conformity with Montessori principles are criteria not normally available or sought in the larger education marketplace. Therefore, advertisers to the Montessori community must direct their advertising specifically to this market through direct mail or a limited number of trade publications.

The *Montessori Observer* is an ideal media to reach the special Montessori market. The *Observer* is provided specifically for the Montessori community through distribu-

tion at no cost to Montessori schools in North America and IMS members throughout the world.

A special *marketplace* section provides advertisers space for editorial style notices at \$7 per line. *Positions and Placements* ads are \$10 each and will be set and edited by us to conform to space requirements.

Write for our advertising outline which contains rates, schedules and other information about design advertising. Space reservations must be arranged by the 15th of the month preceding the issue date. Request advertising space by completing the Reader Response form.

Announcements

North American Montessori Teachers' Association (N.A.M.T.A.) is sponsoring a lecture-seminar by Jerome Bruner on Friday-Saturday, April 25-26. Topics include the *Timeline of Man and Man: A Course of Study*. \$50 fee required. Contact: David Kahn, 2859 Scarborough Rd., Cleveland Heights, OH 44118.

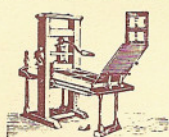
Montessori Teachers Association of Northern California is sponsoring a seminar/retreat on April 6-9, 1980 at Asilomar Retreat Center, Monterey, CA. Topic of the seminar is *The Essence of the Inner Being and the Development of Personality*. Contact: Tom Sipes, Montessori Children's House, P.O. Box 504, Petaluma, CA 94952.

AMI Montessori Education Center Palo Alto is sponsoring a seminar on April 10-12, 1980 at Vallombrosa Center, Menlo Park, CA. Topic of the seminar is *The Child In Today's World and the Responsibility of the Adult-Society in the Care and Nurturing of Its Children*. Contact: Lena Wikramaratne, 3895 Nelson Drive, Palo Alto, CA 94306, (415) 494-1087.

Erdkinder Report, sponsored in part by N.A.M.T.A. is a newsletter written by Phil Gang for Erdkinder research. For subscription information, contact: Phil Gang, Editor, 4202 Ashwoody Trail, Atlanta, GA 30319.

Montessori Institute of America (M.I.A.) is sponsoring a workshop on Saturday, March 22, 1980 at the Bishop Helmsing Center, 2402 Swope Parkway, Kansas City, MO 64130. For further information, contact: Chuck Plath, M.I.A. 5901 N.W. Waukomis Drive, Kansas City, MO 64151, (816) 741-6940.

Washington State Montessori Society is now being organized to provide a basis for communication and harmony throughout the Washington Montessori community. A newsletter to Montessori schools is planned. For further information, contact: Mary Ruth, Montessori Manor, P.O. Box 2019, Renton, WA 98055, (206) 255-9666.



Montessori PUBLICATIONS

IMS provides the listed Montessori publications to support awareness and understanding of Montessori education. The publication list includes library resources of particular use and interest in the Montessori classroom. Complete the Reader Response form to order books. **All orders must be prepaid.** IMS members may purchase listed books at a 20% discount.

<i>Carinato, Sister Mary Ellen et al</i> Montessori Matters	CMM 1	14.00	<i>Maria Montessori (cont'd.)</i> From Childhood to		
			Adolescence	MMC 2	2.75
<i>Hainstock, Elizabeth</i> Teaching Montessori in the Home: The Preschool Years	HET 1	3.95	Montessori Elementary Material, The	MMM 3	5.75
			Montessori Method, The	MMM 4	3.95
Teaching Montessori in the Home: The School Years	HET 2	3.95	Secret of Childhood, The	MMS 5	1.95
The Essential Montessori	HEE 3	1.95	Spontaneous Activities In Education	MMS 6	3.75
<i>Kramer, Rita</i> Maria Montessori: A Biography	KRM 1	4.50	<i>Orem, R.C., ed.</i> Montessori Handbook, A	ORM 1	2.45
			Maria Montessori: McClure's Magazine Articles	ORM 2	3.95
<i>Lillard, Paula</i> Montessori: A Modern Approach	LPM 1	2.75	<i>Standing, E.M.</i> Maria Montessori: Her Life and Work	SEM 1	1.95
			Montessori Revolution in Education, The	SEM 2	3.95
<i>Malloy, Terry</i> Montessori and Your Child—A Primer for Parents	MTM 1	4.95	MCP Primary Readers		
			Set 1, Short Vowels	MCP 1	6.64
<i>Montessori, Maria</i> Dr. Montessori's Own Handbook	MMM 1	2.25	Set 2, Long Vowels	MCP 2	6.64
			Set 3, Consonant Blends	MCP 3	6.64
			Set 4, Consonant Digraphs	MCP 4	6.64

Interested in Montessori?

Apply for IMS membership.
Receive the following benefits:

- Subscription to *Montessori Observer*
- Montessori publications
- IMS program information

Contact: Lee Havis, Executive Director
International Montessori Society
P.O. Box 4338
Washington, D.C. 20012
(301) 589-1127



**INTERNATIONAL
MONTESSORI
SOCIETY**

Return postage guaranteed
Address correction requested

P.O. Box 4338 • Washington, D.C. 20012

OBSERVER
The Montessori



BULK RATE
U.S. POSTAGE
8.4¢ PAID
Silver Spring, MD 20910
Permit No. 3875

READER RESPONSE

Complete and mail to: IMS, P.O. Box 4338, Washington, D.C. 20012 February 1980/Vol. 1, No. 1

Name	Position	()	Tele.
Street	City	State	Zip Code ()
Name of School	Tele.		
Street	City	State	Zip Code

Please send information about:

- Montessori Teacher Training
- IMS Montessori School Membership
- Establishing an IMS Training Center
- Associate School Membership
- Group Medical and Dental Insurance
- Parent Education Course
- Advertising in *Montessori Observer*
- Montessori Elementary Training Program

Individual Membership Application:

1. Complete the above information with accurate mailing address of applicant.
2. Detach the Reader Response Form and enclose in envelope with a check or money order to IMS for \$10.
3. Mail to IMS.

Advertising:

Advertising or announcement information for publication in the *Observer* (April, 1980). (There is no fee for announcement of workshop or meeting of general interest to the Montessori community.)

- Position/Placement (enclosed \$10)
- Marketplace (IMS bills you; \$7/line)
- Display (size _____)
- \$ _____ Check enclosed

Ad copy or other comments: _____

Montessori Books:

Quantity	Title/Code	Price	Total Price
			Postage/Handling (10% of total price)
			Less 20% IMS member discount
			Amount enclosed